



# Active Workspace

## Streamlined and intuitive PLM user experience anytime, anywhere, on any device

### Benefits

- Increase productivity by finding the right information, in the context of the task at hand, faster and easier than ever before
- Avoid costly mistakes and make smarter decisions by seeing the big picture in greater clarity
- Reach your extended enterprise users and harness their knowledge by providing simple and intuitive access to PLM anytime, anywhere, on any modern computing device

### Features

- Clean and simple, mobile friendly user experience
- Web-based platform accessible on any modern computing device without a client or plug-in installation
- Context-aware summary views
- Configurable user interface themes
- Dynamic, configurable home page
- View assignments and participate in workflows
- View change information
- Create and revise items, upload files and edit object properties

### Summary

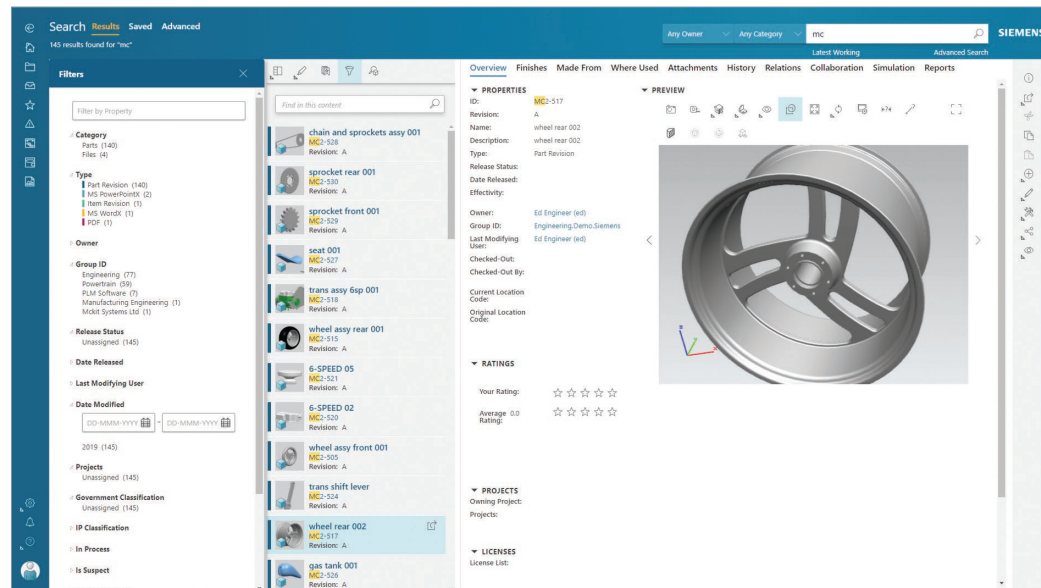
Throughout the complex product life-cycle, you are expected to make good decisions in the context of a large amount of input and data, often from a variety of sources. Active Workspace from Siemens Digital Industries Software is an innovative web-based client platform that simplifies product lifecycle management (PLM) for all

users involved in your product lifecycle. Active Workspace makes Teamcenter accessible by providing a streamlined and intuitive PLM user experience anytime, anywhere, on any modern computing device.

### Find what you need faster

Do you spend a lot of time searching for the information you need to complete your work? Does it seem like you need to know exactly what you're looking for, and exactly how to look for it, before you can actually find what you need?

Active Workspace's powerful search and filtering capabilities visually present search results in logical groups, making



If you know how to shop using Amazon, eBay, Google, etc. you are already know how to find what you're looking for using Active Workspace. Searching in Active Workspace is simple but not limited. Familiar search, filter, and navigation capabilities help you find what you need faster than ever before.

# Active Workspace

## Features *continued*

- Submit issues, problem reports and change requests
- Full-text search on files and file contents
- Intelligent charting logically and visually groups search results for easy navigation
- Context-based filters on search results
- Shape search finds parts that are geometrically similar
- Search and filter data based on classification attributes
- Find and aggregate relevant PLM data stored in external systems
- Save frequently used searches
- Breadcrumb navigation
- Launch information into the appropriate authoring tool in context
- Visualize large and complex 3D product data without any installation
- Preview requirements and specifications
- Where used/referenced and traceability tracking
- Interactive relationship browsing
- Electronic work instructions
- View and access reports and dashboards with Teamcenter Reporting and Analytics

it easy for you to drill-down and browse to find what you need, faster than ever before. Intelligent charting, filtering on properties, shape and classification as well as results ranking capabilities allow you to find the information you need without having to know about how the data is structured within the PLM system.

When relevant PLM data is scattered across multiple systems, Active Workspace helps aggregate this data into a single location so you don't have to waste time searching in multiple locations.

Active Workspace helps you find the right information, in the proper context of the task at hand, easier than ever before.

## Make smarter decisions

Finding what you need is only half the battle. You need to understand the information you find, in the proper context, to make decisions.

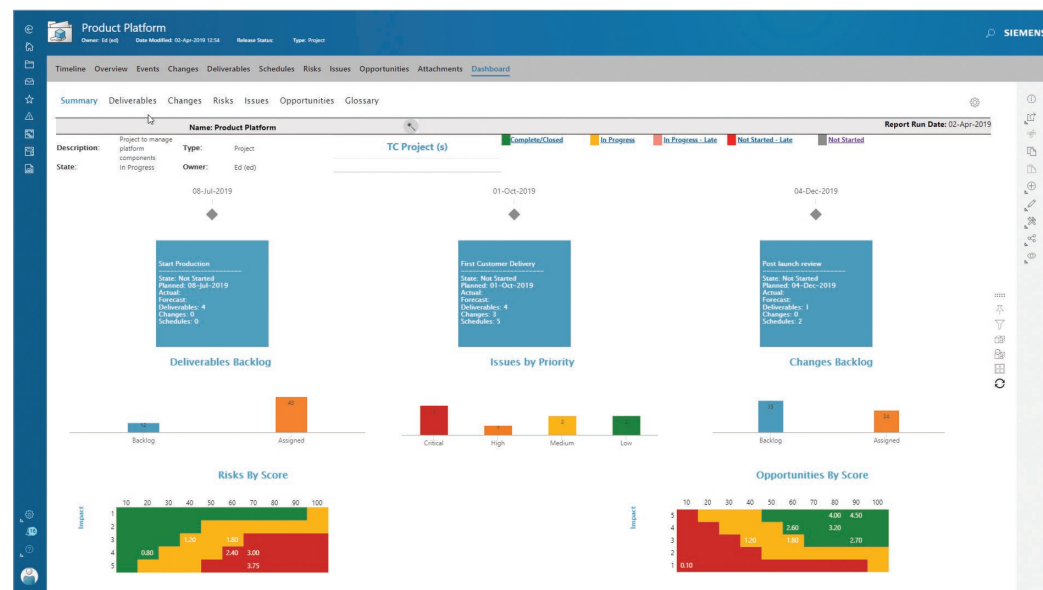
Active Workspace enables you to access information in the context of your role

and the tasks that you're trying to accomplish, proactively presenting you with only relevant information. Active Workspace helps you make smarter decisions by cutting through the clutter and allowing you to see the big picture.

Powerful capabilities such as Structure Browser, Relationship Browser as well as Reporting & Analytics allow you to quickly and visually identify critical issues as well as understand and navigate various relationships between different pieces of data.

Active Workspace makes it easy for users not familiar with the intricacies of PLM to participate in PLM – reviewing tasks in a workflow, signing off on assigned tasks, submitting new documents into a workflow, submitting problem reports, visualize and analyze 3D data and more.

Using Active Workspace, you can avoid costly mistakes and make smarter decisions because you can now see the big picture in greater clarity.



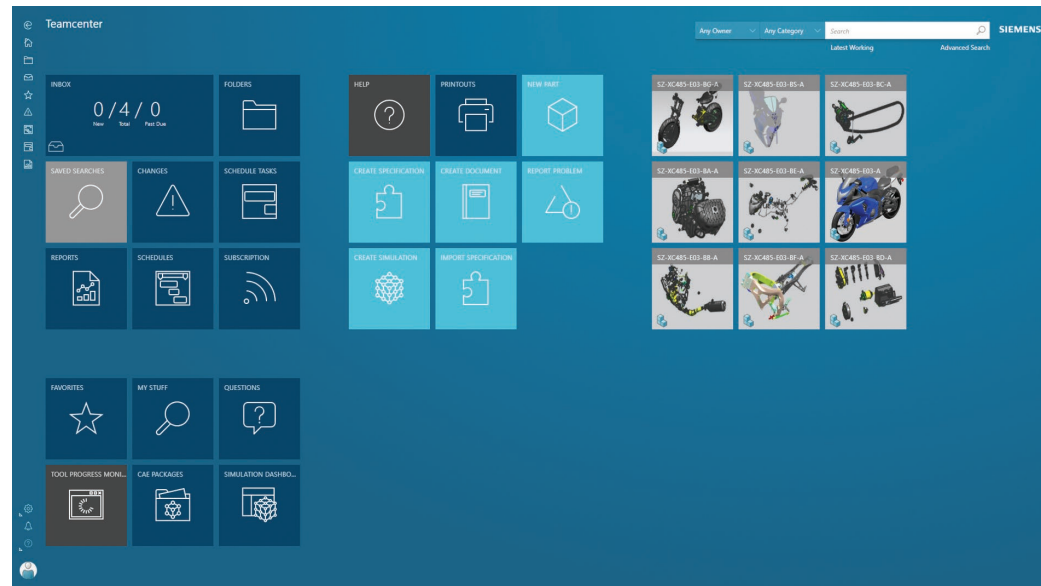
For people responsible for product planning, you can author schedules, tasks and requirements in Active Workspace, and collaborate with upstream and downstream stakeholders to be sure all product-related decisions are aligned.

## PLM anytime, anywhere

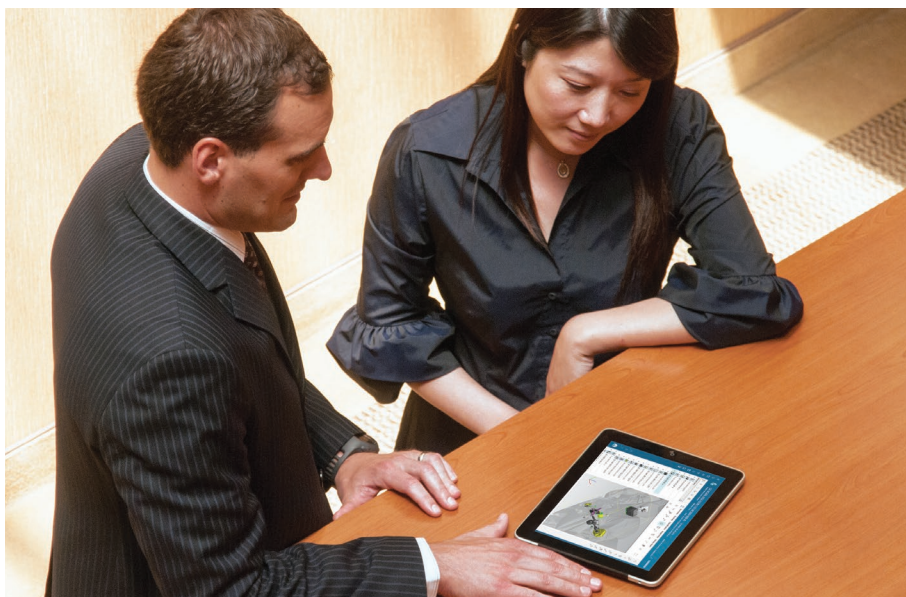
Active Workspace allows you to reach your extended enterprise users and harness their knowledge by giving them access to simple and intuitive PLM when and where they need it.

Using Active Workspace enables you to access Teamcenter anytime, anywhere by simply opening a browser on your desktop, tablet or smartphone. It runs on any operating system, any browser and any modern computing devices, with no installation needed and no special plug-in requirements to simplify deployment. Active Workspace's touch-enabled, intuitive interface is optimized to support both mobile and desktop devices. The interface can be easily tailored to fit your business, allowing you to minimize user training and foster quick adoption throughout your enterprise. By embedding Active Workspace into applications such as Microsoft® Office and NX™ software, you can access powerful PLM capabilities of Teamcenter from within familiar applications.

Using Active Workspace makes PLM available when and where it's needed, allowing you to simplify user adoption and realize faster return-on-investment.



It all starts on your home page. Your Active Workspace home page is the centralized location for all your tasks. Pin items to your home page that you use most frequently, like you do a task or toolbar. A familiar simple search box is always available when you need it.



Siemens Digital Industries Software  
[siemens.com/plm](https://www.siemens.com/plm)

Americas +1 314 264 8499  
 Europe +44 (0) 1276 413200  
 Asia-Pacific +852 2230 3333

Restricted © Siemens 2019. Siemens, the Siemens logo and SIMATIC IT are registered trademarks of Siemens AG. Camstar, D-Cubed, Femap, Fibersim, Geolus, GO PLM, I-deas, JT, NX, Parasolid, Polarion, Simcenter, Solid Edge, Syncrofit, Teamcenter and Tecnomatix are trademarks or registered trademarks of Siemens Product Lifecycle Management Software Inc. or its subsidiaries or affiliates in the United States and in other countries. All other trademarks, registered trademarks or service marks belong to their respective holders.  
 26883-C10 6/19 C